

# AUCTION

TIMED ONLINE



*Great Bend, Kansas*

**Bidding Opens: Tuesday, March 19**

Danny grew up on the family farm in Great Bend, KS and graduated from Salina Area Technical College with a diesel mechanic degree. He soon after started farming full-time, becoming a 4th generation farmer who loved teaching and working with his grandson. Danny was very respected in the community and served on the local co-op board, Kansas Farm Management Association, and township boards. The Leroy Estate will be selling a full line of late-model John Deere equipment along with a full line of tillage and supporting items.

**CLOSES: TUESDAY, MARCH 26 | 10AM <sup>CDT</sup> 2024**

## Daniel "Danny" LeRoy Estate Farm Equipment



2022 JOHN DEERE 8R 340



2013 JOHN DEERE 8335R



2020 JOHN DEERE S770



2023 JOHN DEERE RD35F



JOHN DEERE 608C



JOHN DEERE N540 CCS



JOHN DEERE 1720



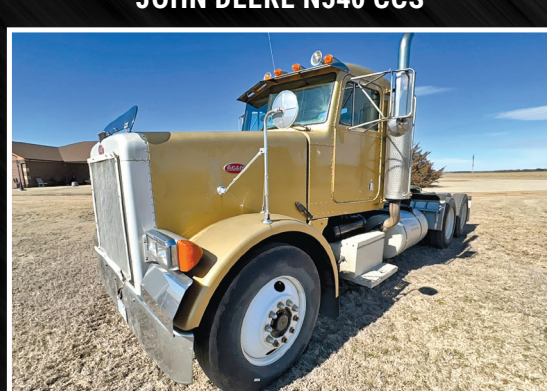
GREAT PLAINS 8544FCF



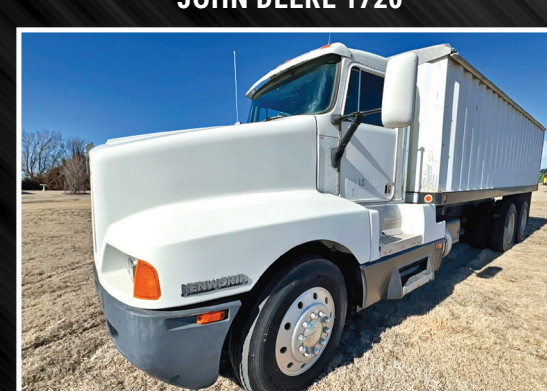
JOHN DEERE 2100



SUNFLOWER 1436



1992 PETERBILT



1990 KENWORTH W900



2006 MERRITT



2019 GMC SIERRA 2500 HD



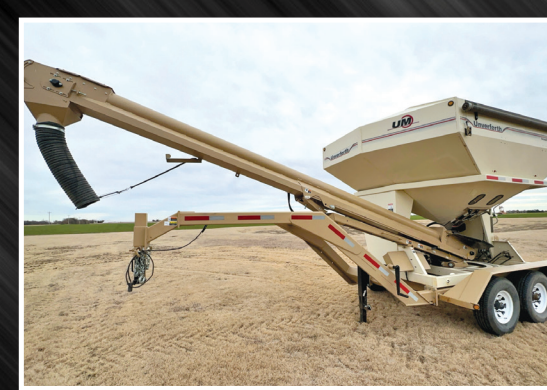
2010 FORD F-250 LARIAT SUPER DUTY

CONTACT STEFFES GROUP REPRESENTATIVES  
 DAVID YODER, 620.664.8981  
 BRANDON CHANSLER, 620.617.3410

SCAN FULL AUCTION DETAILS



J&M 1151



UNVERFERTH SEED RUNNER 3750XL



COOP GRAIN BINS



**SteffesGroup.com | 620.202.6890**  
 Steffes Group, Inc., PO Box 94, Lakin, KS 67860



All items sold as is where is. Payment of cash, check, or credit card must be made up to two days post auction close before the removal of items. Statements made online take precedence over all advertising. \$35 documentation fee applies to all titled vehicles. Titles will be mailed. Canadian buyers need a bank letter of credit to facilitate border transfer.